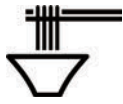


GLOBAL STANDARD RAMEN



Please choose your noodle firmness:

- | | | | |
|----------------|-------------------|------------------------|--------------------------|
| SOFT
(YAWA) | MEDIUM
(FUTSU) | FIRM
(KATA) | VERY FIRM
(BARI KATA) |
|----------------|-------------------|------------------------|--------------------------|

1. SHIROMARU CLASSIC £15
Original creamy tonkotsu pork broth ramen.



5. AKAMARU MODERN £15.5
Modern tonkotsu ramen with red umami paste & black garlic oil.



9. KARAKA-MEN £16
Spicy tonkotsu ramen with fire miso ball.



2. Shiromaru Tamago £17
Plus soy marinated soft-boiled egg.
3. Shiromaru Chashu £19.5
Plus extra chashu pork belly.
4. Shiromaru Special £24
Plus extra topping set.

6. Akamaru Tamago £17.5
Plus soy marinated soft-boiled egg.
7. Akamaru Chashu £20
Plus extra chashu pork belly.
8. Akamaru Special £24.5
Plus extra topping set.

10. Karaka Tamago £18
Plus soy marinated soft-boiled egg.
11. Karaka Chashu £20.5
Plus extra chashu pork belly.
12. Karaka Special £25
Plus extra topping set.



13. GYOKAI-TONKOTSU £16
A rich long-simmer pork bone soup teaming with nature's umami gifts of the sea.

14. TORI-SHOYU £14.5
Silky whole chicken broth makes our new chintan base ramen.

15. SPICY-TORI-SHOYU £15.5
Silky whole chicken chintan-base ramen with special galic RaYu sauce.

16. VEGGIE RAMEN £14.5
Seaweed mushroom dashi & sesame motodashi.

17. Veggie Tamago £16.5
Plus soy marinated soft-boiled egg.

18. Veggie Special £21
Plus extra topping set.

19. SPICY VEGGIE £15.5
Veggie Ramen w/ fire miso ball.

20. Spicy Veggie Ontama £17.5
Plus soy marinated soft-boiled egg.

21. Spicy Veggie Special £22
Plus extra topping set.

RAMEN TOPPINGS

- | | | | |
|--|------|--|------|
| Ajikiku
Sesame kigurage mushrooms | £2 | Nori
Seaweed sheets | £1.5 |
| Tofu
2 slices of sauce-marinated fried tofu | £2 | Nitamago
Soy marinated soft-boiled egg | £2 |
| Negi
Sliced spring onions | £1.5 | Onsen Tamago
Poached Egg | £2 |
| Karaka Miso
Original spicy miso ball | £2.5 | Pork Belly Chashu
4 slices of simmered pork belly | £4.5 |

KAEDAMA £2
Feeling hungry? Get an extra portion of noodles! We recommend ordering Kaedama when you are half way through your ramen - it takes less than 1 minute to prepare and allows you to enjoy the perfect noodle texture throughout the whole meal.

SPECIAL TOPPING COMBINATION SET

***PORK** £9
Pork belly chashu, bean sprouts, nitamago, spring onions, sesame kigurage mushrooms, seaweed.

***VEGGIE** £6.5
Fried tofu, bean sprouts, nitamago, spring onions, sesame kigurage mushrooms, seaweed.



Please advise our staff of any food allergies or dietary requirements you may have.

STARTER (OTSUMAMI)

- | | | | |
|--|--------------------------------|---|-----------------------|
| 1. Salted Edamame
Boiled edamame pods (soybeans) tossed in sea salt. | £4.5 | 4. Age-Tako Yaki
Fried octopus balls, Takoyaki sauce, Japanese mayo. | £6.5 3pcs / £9.5 6pcs |
| 2. Goma Q-/Spicy GomaQ
Crunchy Japanese cucumber drizzled with sesame dressing. | £5.5 / £6.5 | 5. Aburi Chashu
Seared pork belly chashu, ponzu sauce, spicy bean sprouts, yuzu-flavoured paste. | £8 |
| 3. Ippudo Kara-Age
Ippudo-style fried chicken. | £4.5 2pcs / £8 4pcs / £12 6pcs | 6. Crispy Gyoza - Chicken or Veggie
Deep-fried Japanese dumplings, sweet chilli mayo dip. | £7.5 |

HIRATA BUNS

Fluffy, freshly steamed buns!

£4.5 1pc / £8 2pcs / £12 3pcs

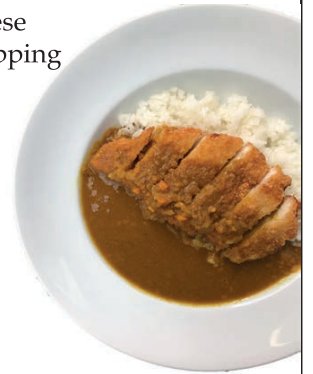
- Pork Belly Chashu
- Chiken Katsu
- Veggie Croquette
- Sweet Chilli Shrimp



CURRY RICE

Original vegetable based Japanese Curry served with rice and a topping of your choice.

- Chiken Katsu £13
- Chicken Kara-age £13
- Deep-fried Shrimp £13



JAPANESE RICE DONBURI



1. Chashu Don
Pork belly chashu in sweet & spicy sauce, Japanese mayo, shredded lettuce, spring onions, sesame seeds.

2. Inferno Chicken Don
Kara-age chicken in extra spicy sauce, shredded lettuce, Japanese mayo, spring onions, red ginger, sesame seeds.

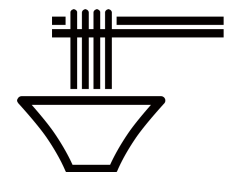
3. Chicken Katsu Don
Chicken cutlet, shredded lettuce, special katsu sauce, red ginger, spring onions, sesame seeds.

4. Tofu Don
Tofu marinated in sweet & spicy sauce, shiitake mushrooms, Japanese mayo, shredded lettuce, ginger, spring onions, sesame seeds.



@IPPUDOLONDON

ありがとう



IPPUDO

Please advise our staff of any food allergies or dietary requirements you may have.